

**SAMSON CREE NATION – MATRIX SOLUTIONS INC.
PARTNERSHIP**

ABORIGINAL CONSTRUCTION MONITORING

WEEKLY REPORT

SPREAD 2

JANUARY 8TH TO JANUARY 13TH

1. PURPOSE OF THIS REPORT

The report is a weekly summary of the daily reports submitted by the Aboriginal Monitors that are working on spread two. The social and cultural findings have been tabulated with locations and mitigation measures below. A summary of the construction activities has been summarized for the week of January 8th to January 13th, 2018.

Social and Cultural Features

Field Observation	# of occurrences	Description and Mitigation Measures	Mitigation Status	Further Action Required (Yes/No)
Traditional Use Area (hunting, fishing, gathering, trapping)	N/A			
Rock Formations (rocks of significance, tipi rings, etc.)	N/A			
Artifacts	N/A			
Bones	N/A			
Potential Gravesites	N/A			

Environmental Features

Field Observation	# of occurrences	Description and Mitigation Measures	Mitigation Status	Further Action Required (Yes/No)
Medicinal or Cultural Plants	N/A			
Aquatic Life	N/A			
Animal Observations or Burrows	N/A			
Bird Nests	N/A			
Trees (Red Willow)	N/A			

Wetlands	N/A			
Watercourse Crossing	N/A			

Additional Observations and Summary of Activities or Concerns

Attended daily safety meetings and discussed daily scopes each morning with the Contractor Liaison Mel Abraham, and/or the Senior Construction monitor and Dean Pooyak from Enbridge.

Weekly activities included spot-checking km 144,159,161-166, and shoofly 93-96.

On January 8, the boring crew was monitored at SF 95. Two mechanics was noted onsite, and equipment crossing was observed at SF 96. Medcor was on location at SF 96. Mechanics were servicing equipment at SF 93, and the track hoe was working on the wetland at km 165+300. At km 163+450, the track bore machine was on location. Crews were cleaning the track hoe at km 144+200 (Spread 2 kickoff) and two excavators were finishing a section of the ditch, as the ditcher left the location. Track bore crew were noted at km 163+450; the crew set in the bore power plant, and the ditcher was getting assembled at SF 93 (km159+400).

On January 9, the monitors observed the boring crew at SF 95. Mechanic was onsite at km 163+500. The crew walked on the spill piles from km 159+600 to km 159+900 (monitors want to revisit areas once the shading starts), and km 163+500 to km 163+550, nothing was found. At km 159+700, two track hoes were digging in the ditch, and at km 159+800 the mechanic was servicing the ditcher wheel. Excavator was digging in the ditch at km 160+600 and excavators and booms were being hauled at km 159+400. Two excavators were digging in the ditch at km 159+600 and 800. Equipment was being moved at km 159+400. They went to view the wetland (km 165+050), where track hoe was working at SK 059, and there were no leaks. At km 162+300, the dozer was seen pushing roach over. Medcor was noted at SF 94. Meridian survey was checking pipe.

On January 10, the track bore crew was monitored at SF 95 and the mechanic was onsite (km 161+300). The monitors walked the spill piles at km 159+900 to km 160+450, and km 161+100 to km 161+700, nothing was found. They checked out the wetland where the track hoe was working, didn't notice any leaks. Medcor was located at SF 94. The ditcher was at work at km 161+900. Two excavators were noted digging in the trench at km 160+100 for lowering in. At km 159+600, six excavators were backfilling. Work was being done on track bore at km 163+450. They travelled to kickoff to see if mainline backfill started, but it hasn't started yet (km 144+200). AT SF 93, ditchers were at work, a long stick excavator was cleaning up the cave in from the night before at km 159+900 to 160+400.

The following day, the boring crew was monitored at SF 95 and the mechanic was onsite at location km 161+400. Lowering in (km 161+050) and backfill were taking place. Medcor was located at SF 94. They observed the mechanic servicing the ditcher at km 163+700. They observed a tractor dragging a mat at SK059 (km165+250). Backfilling was monitored from km 159+650 to 160+450. The ditcher was at work from km 160+500 to km 160+900. The ditcher crew laid down filter cloth in the area at km160, (Marsh Felworth plant is marked in this area) for the spill pile to rest upon. Acme

truck (hydro vac) was spraying mulch for spill separation at km 166+400. Track bore crew started to rip for the next bore at km 161+000.

On January 12, the monitors checked out the backfill crew as they were completing work from km 160+500 to km 160+900. The ditcher was observed at km 160+500 to 160+900. Backfilling was also taking place at km 161+800 to 161+800, and the excavator was digging in bell hole at km 161+050. Lowering in was noted at km 161+850 and km 163+400. The track hoe was cleaning clumps around the ditch at km 162+600. Lowering in was observed at km 162+400. The boring crew was monitored at SF 95 and the mechanic was onsite at km 163+800. Medcor was noted at SF 94. The mechanic was servicing the ditcher at km 163+850. Meridian survey was noted onsite. Ditcher was at work at km 164+800.

On January 13, the mechanic was monitored servicing equipment at km 159+300. The boring crew was observed cleaning up at SF 95, and they also did some setting up at km 161+000. Medcor were located at SF 94. Two excavators were digging bell hole at km 163+050 and track bore was at work at km 163+400. Tie-in was taking place at km 163+400, and the ditcher was noted at km 164+100. At km 164+300, excavators were digging out plug and the tractor was observed pulling mats onto the wetland at km 164+850. The boring crew was noted getting the auger in the drill pipe at km 160+100.

The location of these features was documented and photos were collected (see below). No additional cultural or environmental features were observed within the scanned areas.



1. Ditch – km 144+250 (S.E) – Jan 8, 2018



2. Excavator and spill pile – Km 144+200 – Jan 8, 2018



3. Equipment crossing - SF 96 – Jan 8, 2018



4. Track hoe working on wetland - Km 165+300 – Jan 8, 2018



5. Track hoe (wetland) – Km 165+050 – Jan 9, 2018



6. Spill Piles - Km 163+500 – Jan 9, 2018



7. Spill pile (N) – Km 159+620 – Jan 9, 2018



8. Long stick excavator - Km 160+100 – Jan 10, 2018



9. Ditcher Machine - km 161+850 – Jan 10, 2018



10. Mechanic - Km 161+300 – Jan 10, 2018



11. Mainline – Km 144+393 – Jan 10, 2018



12. HydroVac Spraying Mulch – km 166+400 – Jan 11, 2018



13. Backfill – Km 159+700 – Jan 11, 2018



14. Tractor dragging mat - Km 165+250 – Jan 11, 2018



15. Mechanic - km 161+400 – Jan 11, 2018



16. Bore crew and dozer at bore pit – km 161+000 – Jan 12, 2018



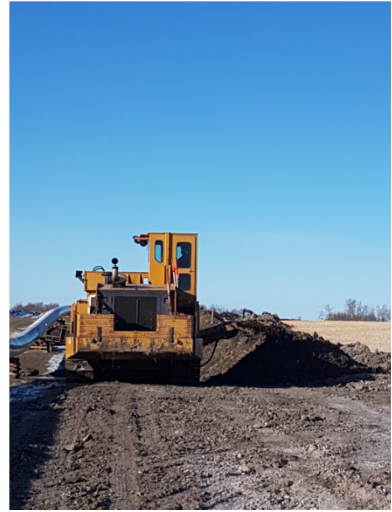
17. Track hoe cleaning clumps in ditch-162+600 - Jan 12, 2018



18. Mechanic - km163+800 – Jan 12, 2018



19. Excavators digging out plug - km164+850 – Jan 13, 2018



20. Excavator - km164+900 – Jan 13, 2018



21. Excavator digging in bore bay – Km 161+000 – Jan 13, 2018


APPROVALS



Drayton Kasokeo
Senior Construction Monitor

January 17, 2018

Date



Daniel Tober
Senior Environmental Scientist

January 17, 2018

Date